



TOKIO MARINE
NICHIDO

For establishing the happy
future among pets and us
through Super Insurance

東京海上日動火災保険株式会社

<http://www.tokiomarine-nichido.co.jp/>

TOKIO
MARINE
GROUP

Got “Live/Love/Animal Prize 2014”



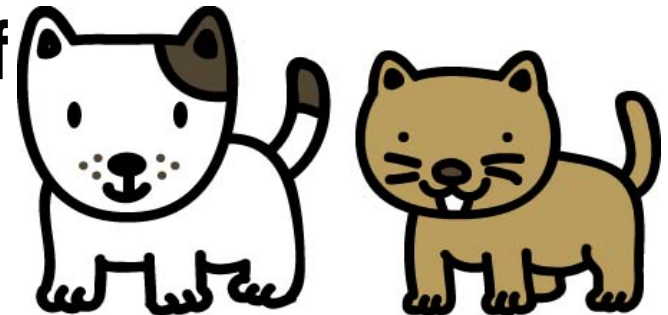
” Comment from selection committee”

- Excellent system for the pets owners when they face the emergency
- We feel that this product is the one of the evidence to show the change of attitude , “pets are the member of family”

Super Insurance/ Pets medical consultation

Our insurance can provide the service that Veterinarians provide consultation for free for 24 hours, 365 days when pet owners want to ask for advice on medical matters and the problems in usual life with pets

Our alliance company, Cherish Life provides this service with membership-based veterinary hospital, Anicli24



◆ Detail consultation issues

- Medical consultation

EX) loss of appetite • develop a lump etc

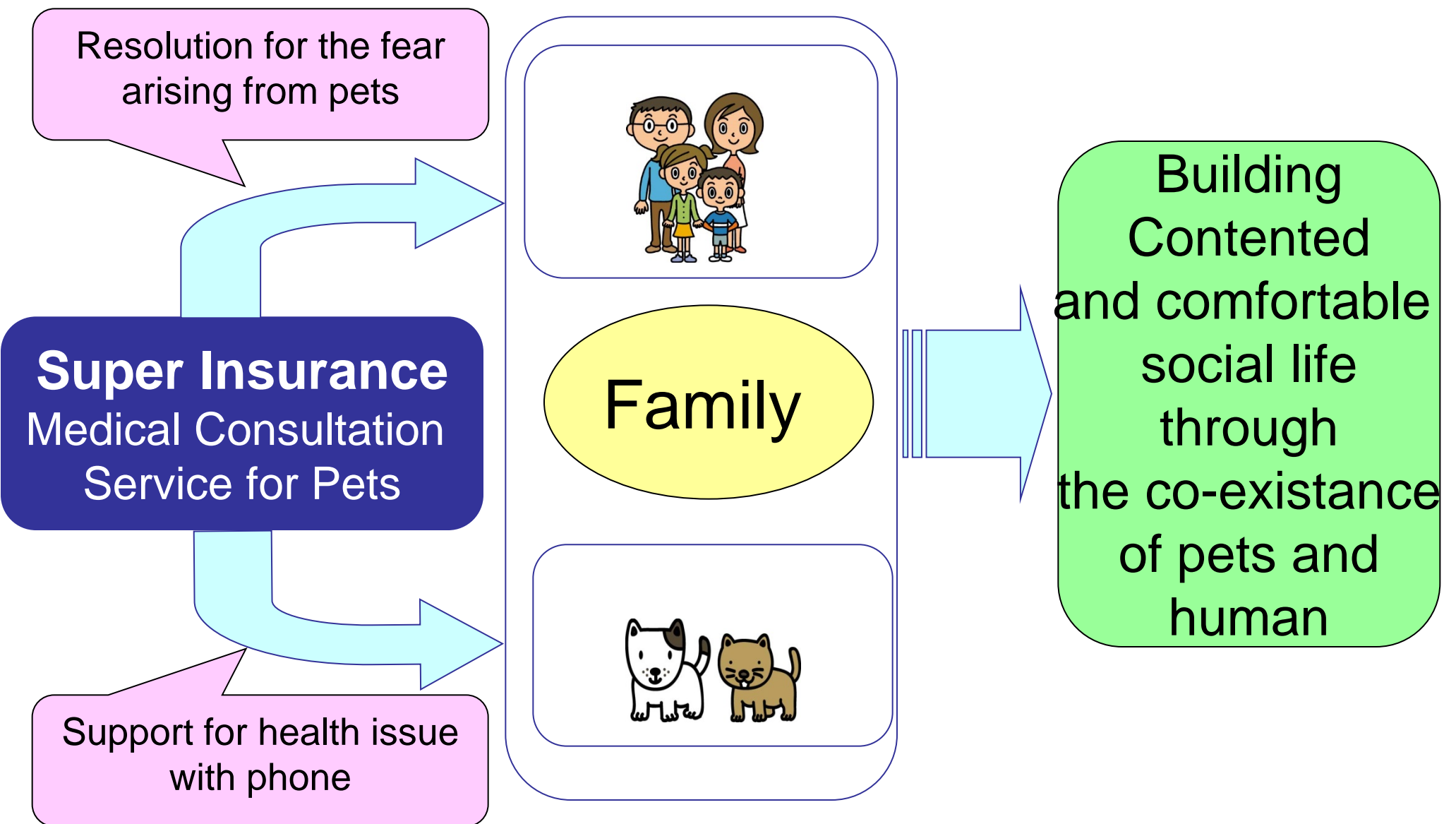
- Consultation on livelihood with pets

EX) Habit of biting and barking etc

- Advice for second opinion and advanced veterinary hospital

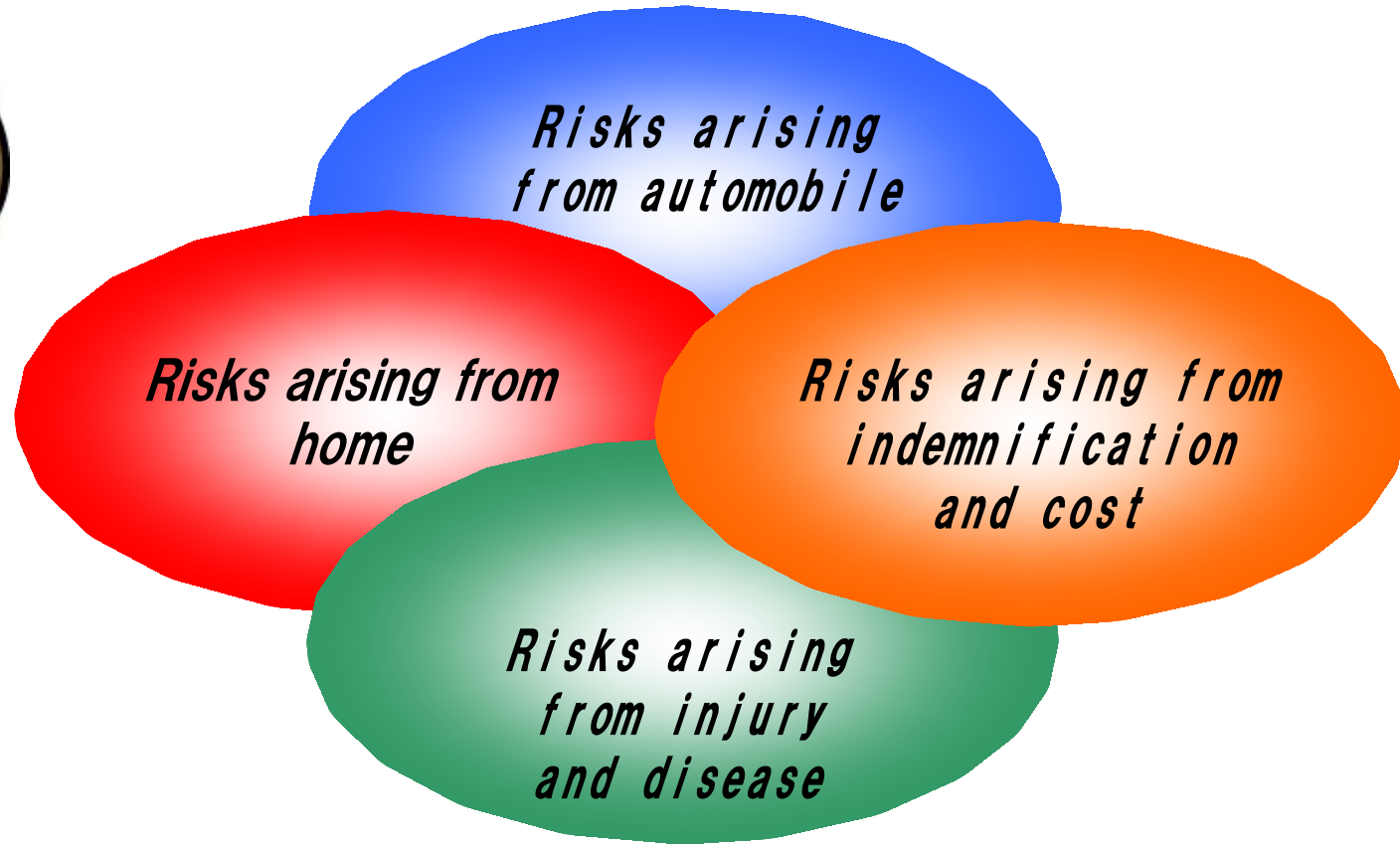
- Information for nearby veterinary hospital

With Super Insurance and Pet Medical Service

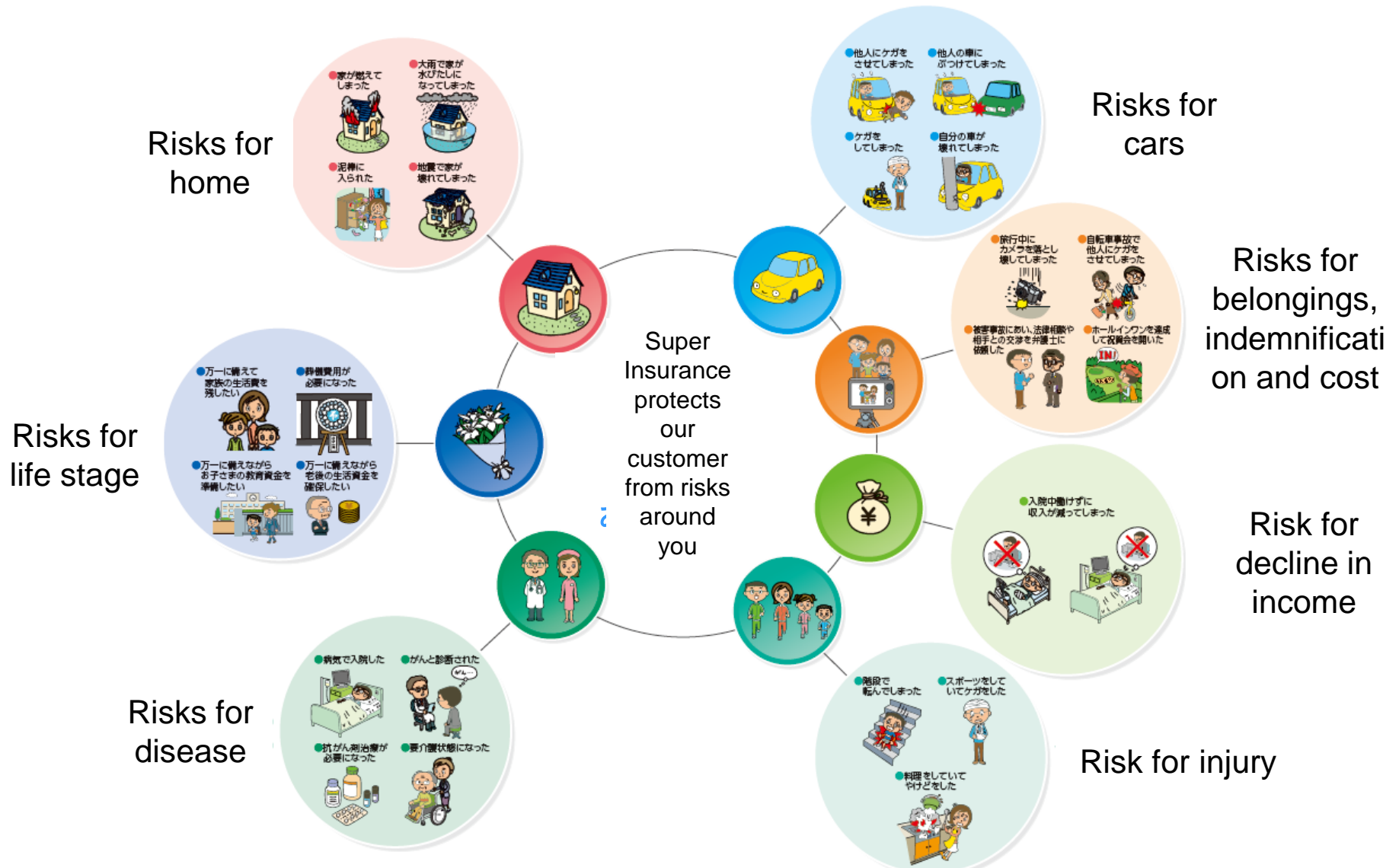


What is insurance?

◆ Risks around us



What is Super Insurance?



Voice from our customers that we want to care our pets as a member of our family



Super Insurance's core concept
“ We protect everybody in a family”

Finally ...

超保険

Super Insurance

**We will support our customers to establish
happy future for people and pets through
“Super Insurance” !**